

# Solar Labeling Requirements



## Junction Box & Conduit Raceways

NEC 690.31(E)(3) - CONDUIT/ALL JUNCTION BOXES

**WARNING**  
PHOTOVOLTAIC POWER SOURCE

NEC 690.35(F) - UNGROUNDED SYSTEM JUNCTION BOXES

**WARNING**  
ELECTRIC SHOCK HAZARD  
THE DC CONDUCTORS OF THIS  
PHOTOVOLTAIC SYSTEM ARE  
UNGROUNDED AND MAY BE  
ENERGIZED.

## DC Disconnects

NEC 690.17(4) - GROUNDED SYSTEMS

**WARNING**  
ELECTRIC SHOCK HAZARD.  
DO NOT TOUCH TERMINALS.  
TERMINALS ON BOTH LINE AND  
LOAD SIDES MAY BE ENERGIZED IN  
THE OPEN POSITION.

NEC 690.35(F) - UNGROUNDED SYSTEMS

**WARNING**  
ELECTRIC SHOCK HAZARD  
THE DC CONDUCTORS OF THIS  
PHOTOVOLTAIC SYSTEM ARE  
UNGROUNDED AND MAY BE  
ENERGIZED.

NEC 690.14(C)(2)

**PHOTOVOLTAIC  
DC DISCONNECT**

NEC 690.53

RATED MAX POWER-POINT CURRENT	<input type="text"/>
RATED MAX POWER-POINT VOLTAGE	<input type="text"/>
MAXIMUM SYSTEM VOLTAGE	<input type="text"/>
SHORT CIRCUIT CURRENT	<input type="text"/>

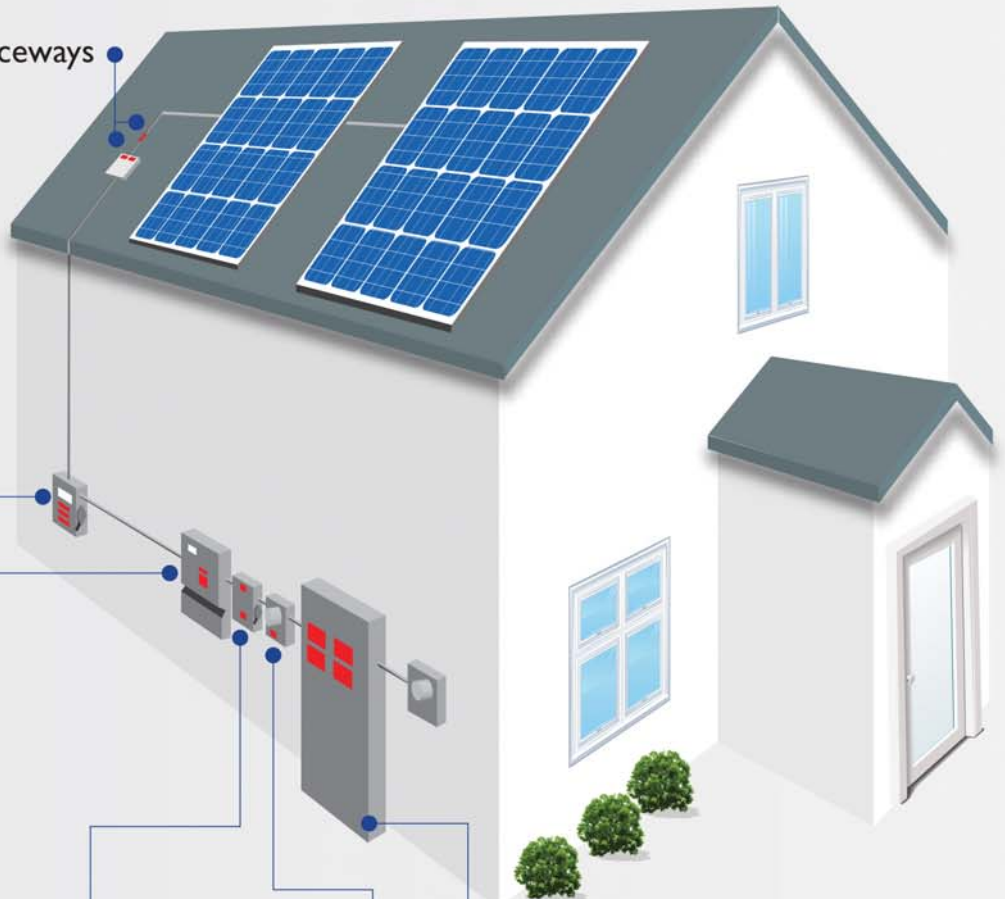
## Inverter

NEC 690.5(C) - GROUNDED SYSTEMS

**WARNING**  
ELECTRIC SHOCK HAZARD  
IF A GROUND FAULT IS INDICATED,  
NORMALLY GROUNDED CONDUCTORS  
MAY BE UNGROUNDED AND ENERGIZED

NEC 690.35(F) - UNGROUNDED SYSTEMS

**WARNING**  
ELECTRICAL SHOCK HAZARD.  
THE DC CONDUCTORS OF THIS  
PHOTOVOLTAIC SYSTEM ARE UNGROUNDED  
AND MAY BE ENERGIZED



## Production Meter

NOT A CODE REQUIREMENT

**PHOTOVOLTAIC  
SYSTEM METER**

## Main Service Panel

NEC 705.12(D)(7) - NEAR PV BREAKER

**WARNING**  
INVERTER OUTPUT CONNECTION  
DO NOT RELOCATE THIS  
OVERCURRENT PROTECTION  
DEVICE

NEC 705.12(D)(4), 690.56(B) - ON PANEL COVER

**WARNING** DUAL POWER SOURCE  
POWER IS BEING SUPPLIED TO THIS  
PANEL FROM THE UTILITY AND A  
SOLAR PV SYSTEM. THE SOLAR PV  
DISCONNECT IS LOCATED:

*Location description or map here*

NEC 690.14(C)(2) - NEAR PV BREAKER

**PHOTOVOLTAIC  
AC DISCONNECT**

NEC 690.54 - ON PANEL COVER

NOMINAL AC VOLTAGE:	<input type="text"/>
RATED AC OUTPUT CURRENT:	<input type="text"/>

## AC Disconnects

NEC 690.14(C)(2)

**PHOTOVOLTAIC  
AC DISCONNECT**

NEC 690.54

NOMINAL AC VOLTAGE:	<input type="text"/>
RATED AC OUTPUT CURRENT:	<input type="text"/>

NEC 705.12(D)(4) - ON A LINE SIDETAP

**WARNING** DUAL POWER SOURCE  
SECOND SOURCE IS PV SYSTEM

## DISCLAIMER

The purpose of this graphic is to provide a reference guide to solar photovoltaic system labeling requirements in accordance with the 2011 National Electric Code (NEC), National Fire Protection Association (Copyright 2010), as interpreted by the Institute for Building Technology and Safety (IBTS). Users should always follow the code requirements and interpretations for specific placement of labels of the presiding Authority Having Jurisdiction (AHJ). NFPA 70®, National Electrical Code® and NEC® are registered trademarks of the National Fire Protection Association, Quincy, MA.